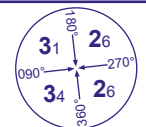
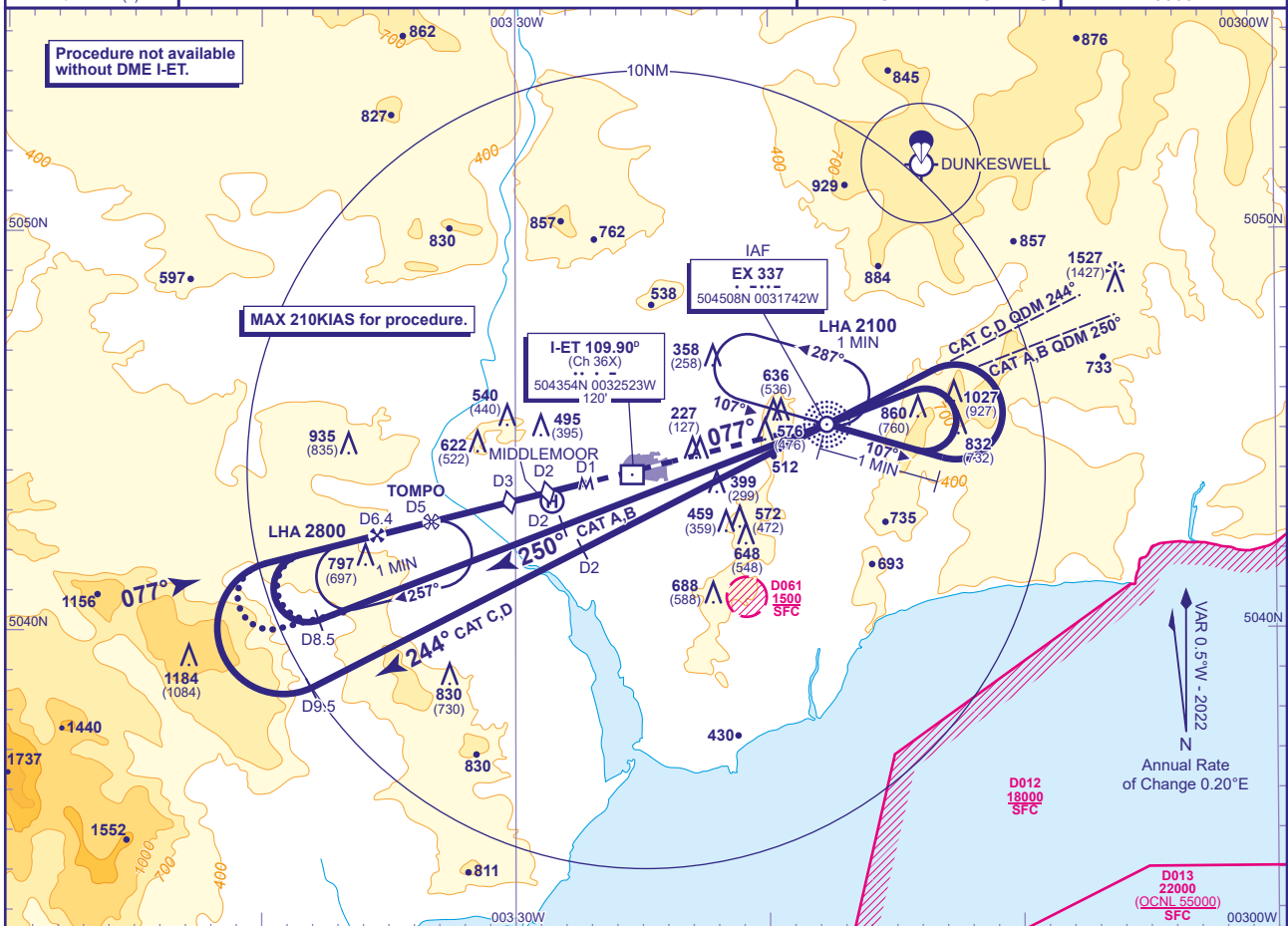


INSTRUMENT APPROACH CHART - ICAO

EXETER
NDB(L)/DME
RWY 08
(ACFT CAT A,B,C,D)

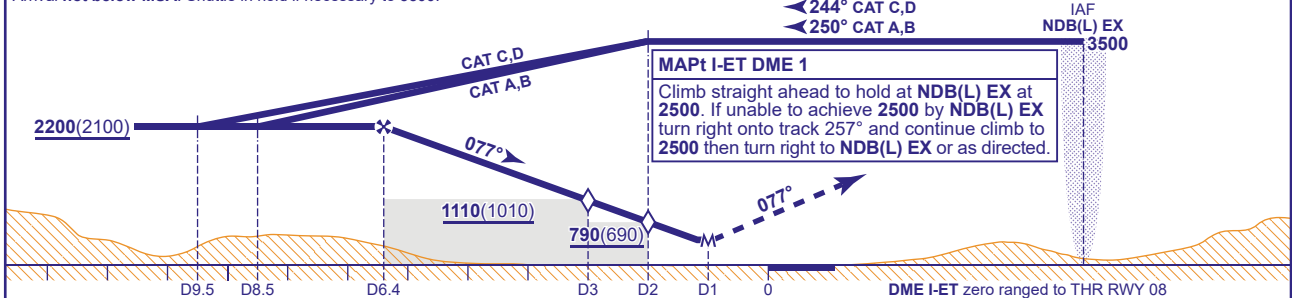
MSA 25NM NDB(L) EX

APP	128.980	EXETER APPROACH	AD ELEVATION	102
TWR	119.805	EXETER TOWER	THR ELEVATION	100
RAD	128.980, 123.580	EXETER RADAR	OBSTACLE ELEVATION	1522 AMSL (1422) (ABOVE THR)
ATIS	119.330	EXETER INFORMATION	BEARINGS ARE MAGNETIC	

TRANSITION ALTITUDE
3000

RECOMMENDED PROFILE Gradient 5.2%, 320FT/NM

DME I-ET	6	5	4	3 (SDF)	2 (SDF)
ALT(HGT)	2070(1970)	1750(1650)	1430(1330)	1110(1010)	790(690)

Arrival **not below** MSA. Shuttle in hold if necessary to 3500.

Aircraft Category		A	B	C	D	Rate of descent	G/S KT	160	140	120	100	80
OCA (OCH)	Procedure	710(610)	710(610)	710(610)	710(610)		FT/MIN	850	750	640	530	430
VM(C)OCA (OCH AAL)	Total Area	710(608)	880(778)	1090(988)	1090(988)							

ALTERNATIVE PROCEDURE (FROM TOMPO HOLD)
Shuttle as required in the TOMPO hold to **3000**. Extend the outbound leg of the hold descending to **not below 2200(2100)**. At I-ET DME 8.5 (CAT A,B) or I-ET DME 9.5 (CAT C,D) commence right turn to establish on the FAT then continue as for basic procedure.

NOTE 1 Lowest altitude to commence procedure from hold after a missed approach is **2500**.
2 ATC will normally require aircraft to hold not lower than **3500** at NDB(L) EX or **3500** at TOMPO.
3 TOMPO hold not available without DME I-ET.

CHANGE (7/21): MAG VAR. MAG TRACKS. DME I-ET ELEVATION, COORDINATES. D012, D013 VERTICAL LIMITS REVISED.